



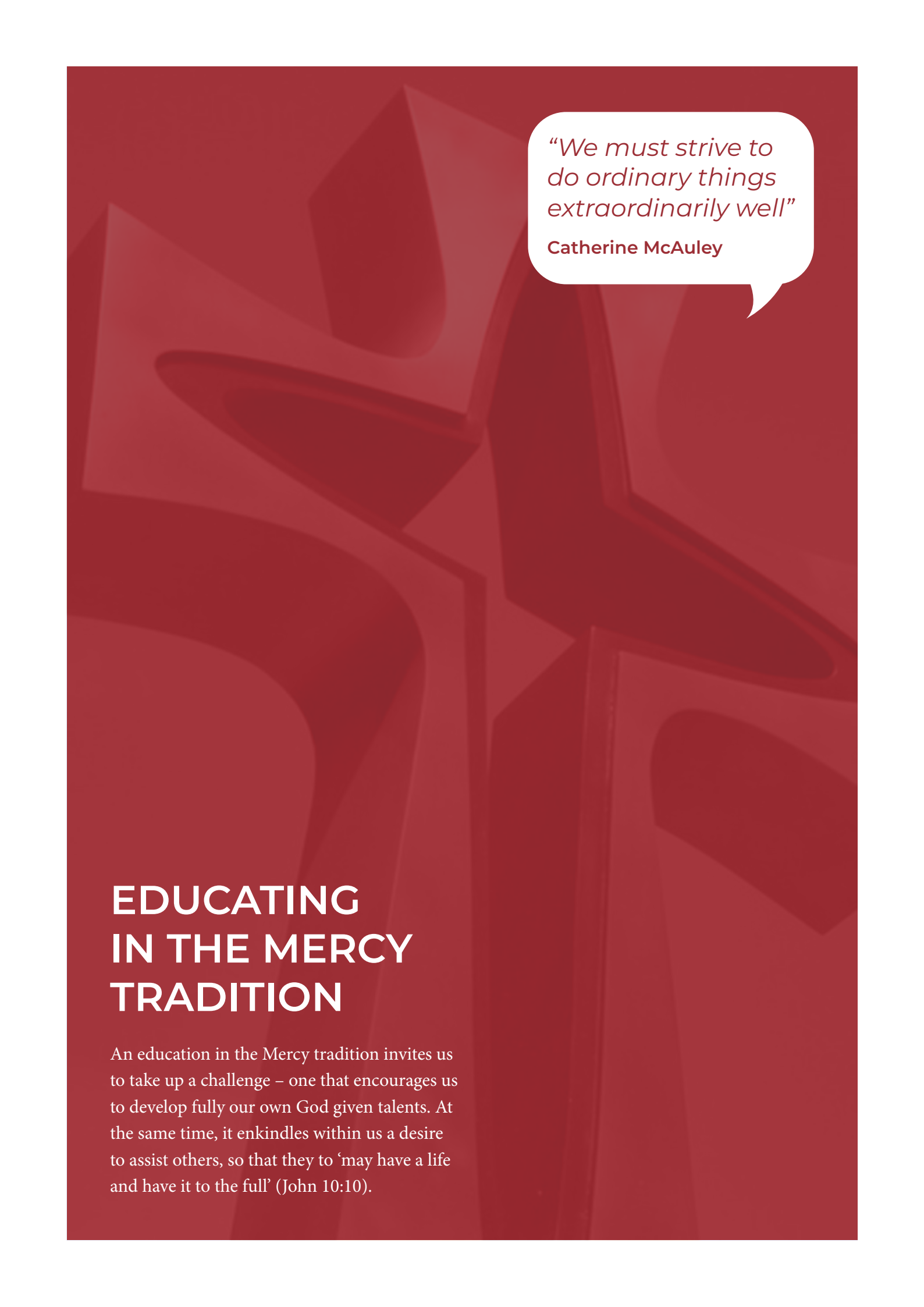
CATHERINE
MCAULEY
SCHOOL

School Development Plan

STRATEGIC PLAN 2023-27

A Catholic education grounded
in the Mercy Tradition






*"We must strive to
do ordinary things
extraordinarily well"*

Catherine McAuley

EDUCATING IN THE MERCY TRADITION

An education in the Mercy tradition invites us to take up a challenge – one that encourages us to develop fully our own God given talents. At the same time, it enkindles within us a desire to assist others, so that they to 'may have a life and have it to the full' (John 10:10).



Catherine McAuley School seeks to fulfill Catherine McAuley's mission of providing quality educational opportunities to all children in all surrounding communities.

OUR MISSION

OUR VISION

We strive to deepen our relationship with God and one another and to intensify our work with those seeking a more just and inclusive world.

Faith, Growth and Unity are an expression of our school as a community of thriving people, capable learners, leaders for the world God desires.

We are a community of FAITH with a focus on GROWTH through education, which is achieved in UNITY with one another as a thriving community with a shared responsibility.

Achieving our goals

We will strive to achieve our goals, while being guided and inspired by the Mercy Education Values and Catherine McAuley's actions and beliefs. These are:

Compassion for one another, putting faith in action and promoting inclusion and kindness.

Justice for all, standing up for what is right and helping those who cannot do it themselves, growing relationships with all that create fairness and justice through our words, actions, and attitude.

Respect for all, acknowledging and celebrating the goodness that exists in each of us.

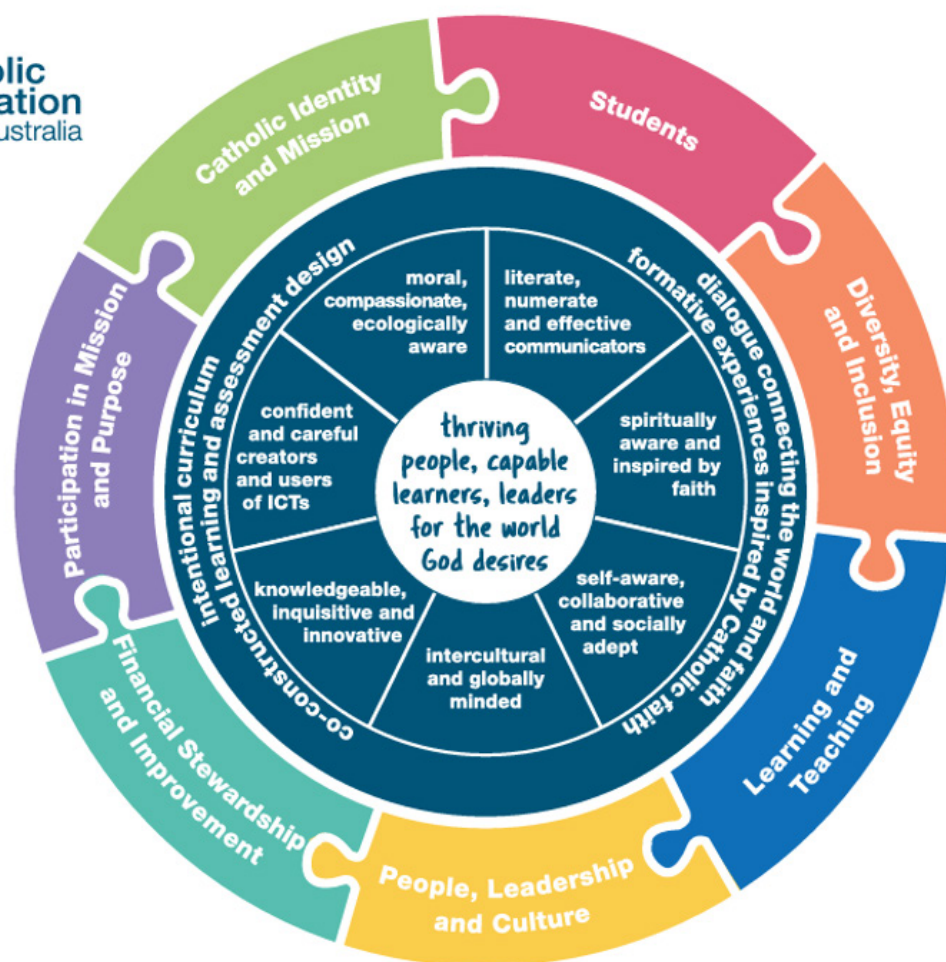
Hospitality shared through opening our arms to strangers and removing barriers that stop us from being an inclusive and kind community.

Service to others, enriching the lives of our community through the expression of our gifts and talents.

Courage to act in the best interest of ourselves and others.

CATHOLIC EDUCATION SOUTH AUSTRALIA (CESA)

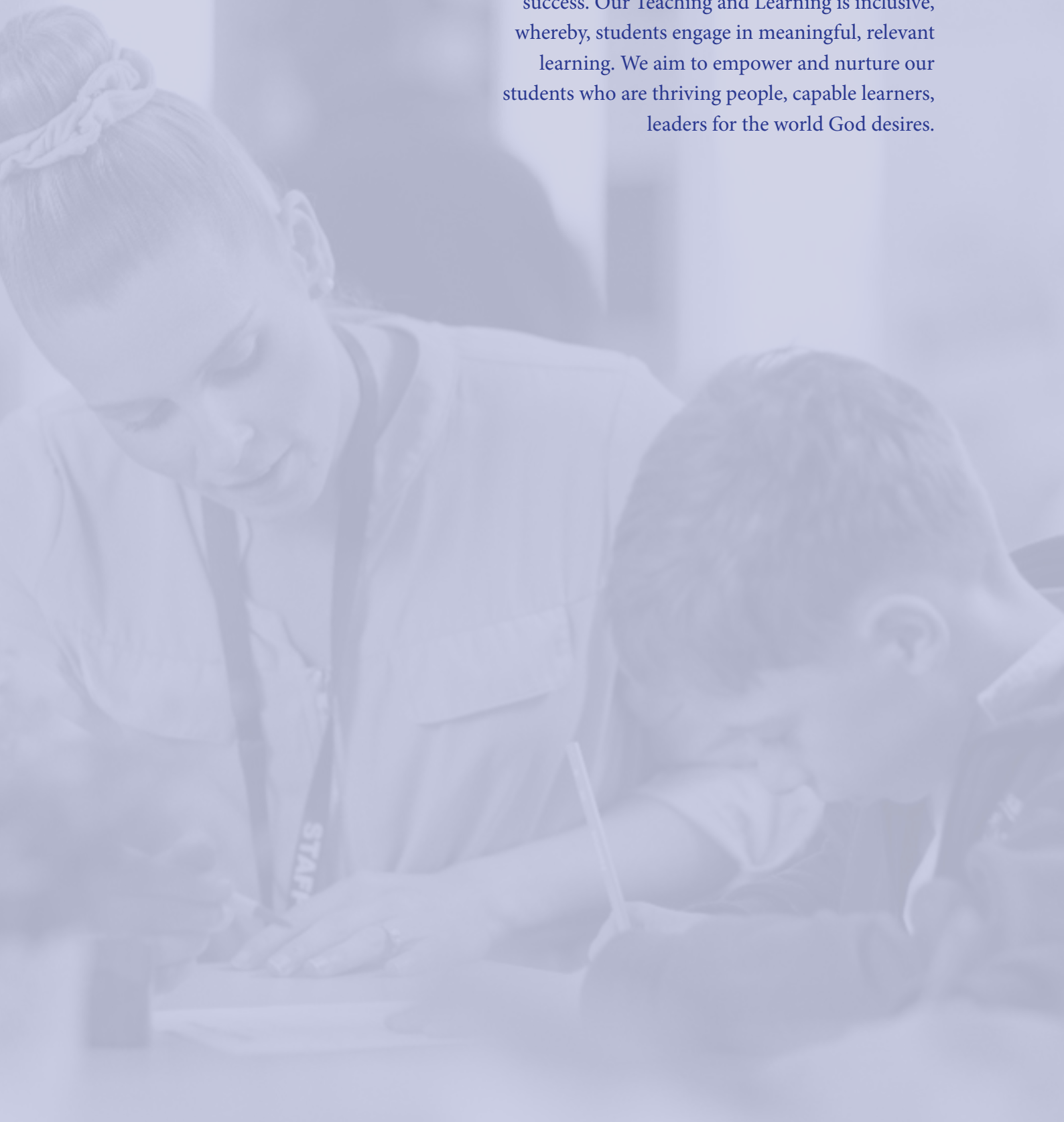
Catherine McAuley School's Strategic Plan is shaped by CESA's Living, Leading Learning Framework for Catholic Education in South Australia.



Catholic Education South Australia, Towards 2027: Expanding Horizons and Deepening Practices (February 2022), P. 3

LEARNING STATEMENT

Teaching and Learning at Catherine McAuley School is structured, systematic, explicit, and frequently modelled to ensure every learner experiences success. Our Teaching and Learning is inclusive, whereby, students engage in meaningful, relevant learning. We aim to empower and nurture our students who are thriving people, capable learners, leaders for the world God desires.



STRATEGIC OUTCOMES

*"We should be
shining lamps, giving
light to all around us"*

Catherine McAuley

CATHOLIC IDENTITY	TEACHING & LEARNING
<p>All members of the school community experience the Catholic faith and Mercy charism through meaningful and authentic ways. As a community, we express our unity and solidarity with the poor, the unemployed, the destressed and the marginalised through our service and faith in action.</p>	<p>To promote high-quality intentional teaching and learning, and the inclusion of all students in the co-construction of their learning experiences. The wellbeing of all students is supported through their learning as they prepare to enter the world as thriving people, capable learners and leaders for the world God desires.</p>
<p>1.1 Promote dialogue about Catholic identity in a way that is meaningful within our contemporary culture, connecting the stories of the Bible to the lives of our students.</p> <p>1.2 Develop and implement a visible commitment to ecological conversion and sustainability, aligning Catherine McAuley School with Laudato Si' and the CESA ecological conversion and action plan.</p> <p>1.3 Enhance our connection to Parish and the Mercy Schools cluster in the North.</p> <p>1.4 Recontextualise the Mercy Charism to new and existing members of our community.</p> <p>1.5 Seek out and foster opportunities to reach those at the fringes of society and be a shining light to them in their moment of darkness.</p>	<p>2.1 Embed Clarity into the teaching and learning practices of Catherine McAuley School and its community.</p> <p>2.2 Ensure teaching and learning programs are underpinned by quality pedagogy and enhance the pedagogical practices of teachers.</p> <p>2.3 As a community of learners, collectively and effectively use data to inform and improve the learning outcomes for all students.</p> <p>2.4 Make student agency intentional and visible in learning and assessment design and implementation.</p> <p>2.5 Recognise and respond to the abilities of students striving to overcome challenges and barriers in the education.</p>

STRATEGIC OUTCOMES

"The simplest and most practical lesson I know is to resolve to be good today, but better tomorrow."

Catherine McAuley

RESOURCES & ENVIRONMENT	COMMUNITY & WELLBEING
<p>To enhance the inclusion of all through quality facilities and effective resources (human, physical & financial) to enrich teaching and learning, elevating student outcomes to new levels of excellence for all.</p>	<p>To build strong partnership with families, parish, and the wider community through a culture of inclusion, welcome and shared responsibility for the growth, development, and the positive wellbeing of each other.</p>
<p>3.1 Develop and implement a new Master Plan to ensure the school's infrastructure and its facilities meet the needs of our current and emerging community.</p> <p>3.2 Continue to reimagine a wellbeing and behaviour framework that supports all students to be thriving people, capable learners, leaders for the world God desires.</p> <p>3.3 Build upon the existing positive staff culture that enables staff to be fully engaged and thrive as effective educational professionals.</p> <p>3.4 Support CESA's strategic priorities enabling access to Catholic education for all by supporting the growth of the school through continued successful financial management.</p> <p>3.5 Actively support the CESA Catholic Schools Scholarship Program, creating opportunities for vulnerable people in our community to have a thriving and productive future.</p>	<p>4.1 Work in collaboration with families and support agencies to respond to the specific needs of students and young people in our care.</p> <p>4.2 Complete and implement an approved Reconciliation Action Plan (RAP).</p> <p>4.3 Build upon the welcoming and nurturing culture of our community to promote diversity and inclusion of all.</p> <p>4.4 Strengthen our partnership with the local Parish and schools within the Mercy cluster of the Northern region.</p> <p>4.5 Provide opportunities for our community to engage and shape the future of Catherine McAuley School and come together to celebrate and support one another.</p> <p>4.6 Continue to make Catherine McAuley School the school of choice for all.</p> <p>4.7 Create a culture of shared responsibility in our community.</p>